

Talk to Armidale Regional Council

- February 24, 2021

Our aim: "to assist in the careful planning, design and development of beautiful, healthy and safe public spaces featuring wetlands, lagoons and billabongs, connected by flowing water along the Armidale Creeklands"

On behalf of our committee:

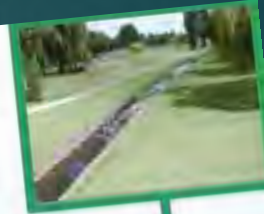
- ▶ *Graham Wilson (Vice President)*
- ▶ *Liz Fulloon (Secretary)*
- ▶ *Peter Galbraith (Treasurer)*
- ▶ *Martin Levins (IT)*
- ▶ *Don Hardman*
- ▶ *Jim Reid*
- ▶ *Hani Soliman*
- ▶ *Jim Scott (President)*



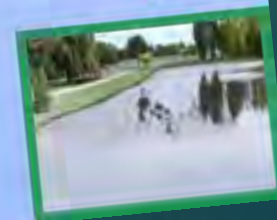
2002

Community Workshop Armidale Creeklands

- April 20, 2002
- Convened by Armidale Dumaresq
Creeklands Committee



?



2017

Unleashing the Opportunities for Armidale's Creek Lands

- ▶ Presentation on behalf of the Visions for Armidale's Creek Lands Committee (established 2002)
- ▶ Dr Jim Scott, Dr Hani Soliman, Dr Izabel Soliman, Ms Susie Dunn, Mr Don Hardman and Mr Graeme Fordham AM

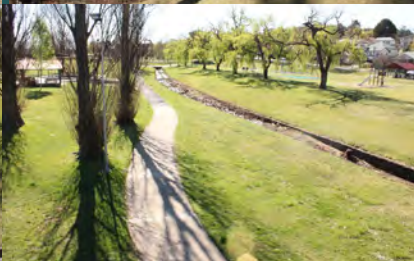
▶ June 7, 2017



Our association contributed our ideas to the Master Plan consultants

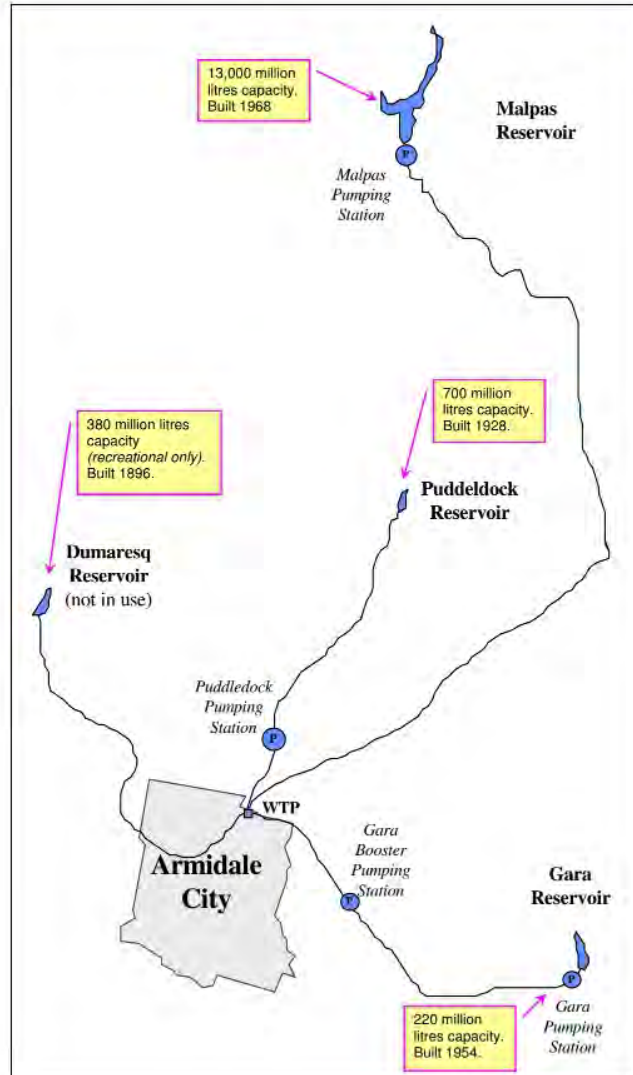


Bus tour 1

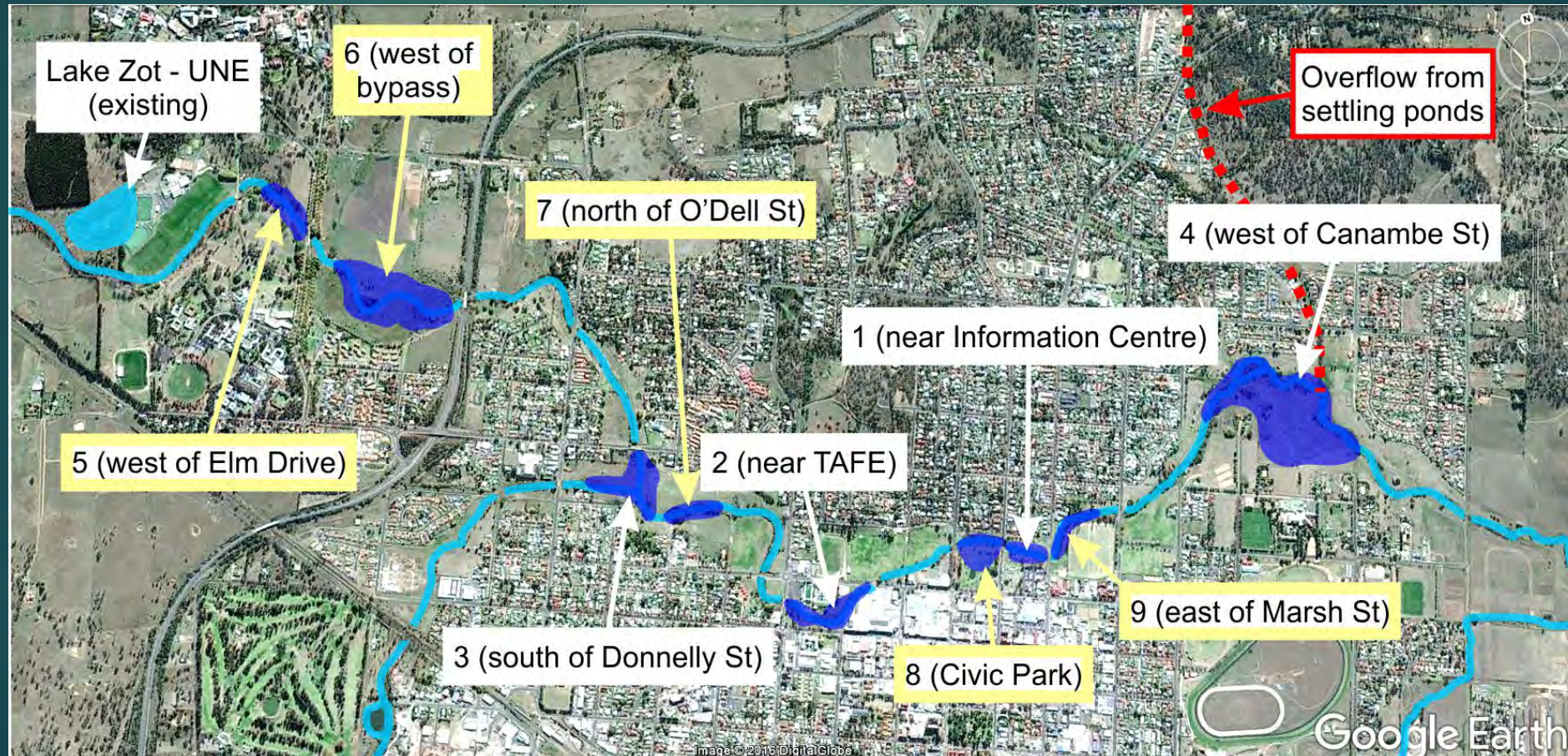


Bus tour 2

ARMIDALE HAS 3 ACTIVE WATER SUPPLY SOURCES



Our priority candidate areas ... 2019



Calculations

by Darling
Irrigation



Pipe Type	PE100 AS/NZS 4130 (Poliplex)
Diameter (mm)	160
Pipe Class/Stiffness	10
Length of Pipeline (m)	7213
Source Reduced Level (m)	969
Discharge Reduced Level (m)	990
Colebrook-White Roughness "k" (mm)	0.01
Kinematic Viscosity of Fluid (m ² /sec) x 10 ⁻⁶	1.01
Required Flow Rate (l/s)	5

Static Lift	21 (m)
Friction Losses	5.824956112611 (m)
Total Head at Pump	26.824956112611 (m)
Flow Velocity	0.32158214530332 (m/s)

Budget Costs

	Qty	Rate (\$)	Total (EX GST)
Pipeline 160/10 HDPE	7,300	\$ 13.00	\$ 94,900.00
installation incl mobilisation	7,300	\$ 25.00	\$ 182,500.00
valve assemblies and scour points	14	\$ 1,500.00	\$ 21,000.00
pump station	1	\$30,000.00	\$ 30,000.00
control and telemetry	1	\$15,000.00	\$ 15,000.00
contingency	1	\$20,000.00	\$ 20,000.00
Total			\$ 363,400.00

Bus tour 3

With local Aboriginal representatives



What are our Visions?





It's all about water!





Water – the key to our inland city

More visible
water in
healthy
pools, riffles
and streams



Looking west towards Taylor and Donnelly Sts

Need for continuously flowing water!



Near Ex-Services club



East of Cookes Rd bridge

Our primary focus: improving the creeklands environment

- ▶ Restore the natural levels of water flowing along the creeks of the city
- ▶ Consider how all water sources link to the city, including Dumaresq Dam
- ▶ Healthy oxygenated water
- ▶ Water flows through the city every day
- ▶ More healthy life (frogs, insects, plants, birdlife, etc.)



The Creeklands Master

- ▶ A good start
- ▶ Since plan was written (2018), we have experienced the most serious and prolonged drought in recorded history
- ▶ This means that the short, medium and long-term focus of this inland city must be directed towards Water, Water and Water!
- ▶ Without it, our city's future is not assured. It has been over 50 years since we had a major investment in water infrastructure.



Feedback from community submissions

23 submissions from organisations and individuals
60+ pages of the 1200 pages

Water linkage between Armidale and Dumaresq Dam



Constructed wetlands



Some other submission points:

- ▶ Safety/fire hazards
- ▶ Encourage fauna
- ▶ Nature conservation
- ▶ Habitat continuity
- ▶ Nature play area
- ▶ Labyrinth
- ▶ Village green
- ▶ Creek crossings during flood
- ▶ Parking and footpaths
- ▶ Transport implications



What our association submitted

- ▶ A comprehensive professionally prepared document
- ▶ Best features: detailed maps and extensive consultation
- ▶ Soil contamination is described well and should result in plans for remediation
- ▶ Depending on resources, scope of plan to include how **natural flow rates along the creeklands can be restored through water engineering**
- ▶ More engagement with the **Aboriginal community, UNE and Armidale's sporting bodies**
- ▶ Approve recommendations including for a **working group** to continue towards implementation
- ▶ Revise the draft Creeklands Master Plan in response to submissions
- ▶ As we concluded: "With careful design, and water engineering to restore the original water flows, we reckon that instream **billabongs, riffles and wetlands can be created to provide healthy water flows along our extensive creeklands** – without causing erosion or making flooding worse – and so **enhancing the environment, recreation and economy for all in our city**"

McGregor Coxall – Sydney Park



Community Creeklands Concepts

September, 2020



Project proposal: "Community Creeklands Concepts"

Executive Summary

The Armidale creeklands have the potential, with healthy waterways, to attract all forms of life to this unique artery of our city and eventually become a major attraction for visitors. This large area provides a significant opportunity to improve the quality of life, economy and beauty of Armidale.

Visions for Armidale Creeklands Inc is a not-for-profit association that represents a broad cross-section of the community. We want to see water flowing through the city to enhance the beauty of the extensive creeklands environment. We seek funding (\$45K) to place our ideas into an exciting visual plan in this proposed project titled "Community Creeklands Concepts".

The end result will be a conceptual plan that will form the basis of community discussions to provide a fact-based, visual framework. This plan will facilitate the community selecting a list of priorities for future detailed planning and costing in preparation for seeking regulatory approval and funding to implement the selected priorities.

Background

Following our group's presentation to the Armidale Regional Council in June 2017, Council engaged consultants to produce a Master Plan for the central section of the creeklands. This Plan was delivered to Council in 2018 however the Plan has never been released to our association nor the public.

In 2019, an Armidale Regional Plan 2040 was commenced by Council, employing different consultants. Our association made a detailed submission to the consultants with copies to Council. This plan was due to be released in May 2020 but no sign of it has yet appeared.

Our association has attempted on several occasions to engage with Council on developing a plan for the whole length of the creeklands. To date, these efforts have not resulted in any significant interaction between our community group and Council.

Our association aims:



Our proof-of-concept idea for water recycling has been funded

- ▶ After Administrator Mr Viv May came for a walk with our committee

February, 2021

Re-imagine Armidale's Creeklands...

VISIONS FOR ARMIDALE Creeklands INC.

Black Gully Creek Billabongs

Urban Riparian and Stream Restoration Project - Part 2 and Proof of Concept for Water Recirculation

Key components:

In late 2020, our association received funding support from the Armidale Regional Council for this 'proof of concept' project. The aim of the project is to rejuvenate Black Gully Creek by re-establishing the natural hydrological sequence of billabongs, pools, riffles and runs which are a feature of waterways found on the Northern Tablelands. Not only will this work improve the quality of Black Gully Creek, it will also allow for the assessment of the feasibility of this type of project elsewhere throughout the Armidale Creeklands.

Stage 1 of Black Gully Creek Restoration - Pool and Riffle sequence constructed behind NERAM.

Proposed location:

It is proposed to undertake this project along Black Gully Creek, behind the Museum of Education, New England Regional Art Museum (NERAM) and the Aboriginal Cultural Centre and Keeping Place (ACCKP), from the railway line downstream to Taylor Street.

Project Summary

We propose a continuation of the pools and riffles recently created in Black Gully Creek behind NERAM. These were created several years ago due to the wonderful voluntary efforts

1



We acknowledge Terry Cooke photography for many images





Invitation to Councillors ...

- ▶ A bus trip and walk along parts of the creeklands to discuss ideas?



What Council adopted in October ...

The need for consultants to explore soil contamination and remediation

Retention of the labyrinth

A proposal to focus on the Family precinct near TAFE

We note the retention of the existing duck pond



We appreciate the Mayoral minute of January 27, 2021

Financial support to be sought to examine soil contamination and remediation

Council to establish a working group of stakeholders – including Visions for Armidale Creeklands Inc

Explore options with the Soil Conservation Service

Suggestions for Council's consideration

That:

1. Council and its officers support the Black Gully Creek Billabongs project
2. Council endorses recommendation 2 of the Master Plan and the Mayoral Minute of January 27, 2021 by establishing a Community Committee of Council (possibly a Section 355 committee)
3. This Community Committee act on the recommendations of the adopted Creeklands Master Plan; seeking support for future pathways to implementation, adopting a comprehensive approach for design that will best complement the environmental, social and economic dimensions of the Armidale Region
4. The Mayor be the ex-officio Chair of the committee